



# M POWER PLAN™

## 4 WAYS TO EARN

KEY

**PV** = Personal Volume or Retail Sales

**PTV** = Personal Team Volume

**RV** = Retail Volume

**BLUE BOX™** = Autoship/Subscription

1

### REAL RETAIL

- Real Wholesale Pricing
- Real Customers
- Real Retail Shopping Experience
- Real Subscription Program: M BLUE BOX™
- Real Savings & Coupons

- 
- Wholesale to retail pays out weekly
  - Discounts on bulk purchases
  - All customer orders count toward your Personal Volume (PV)
  - 5% Rebates for orders above your PV requirement

2

### FAST CASH

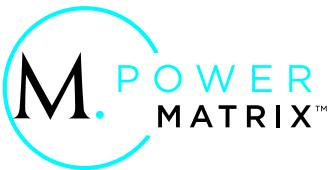
PAYS WEEKLY

Weekly bonus based on pack sales. Fast Cash helps you get started quickly and make money now, without sacrificing tomorrow.

- Sell 4 Builder Packs and make your money back.
- Sponsor 8 and make \$1,200.
- Do it in your first 30 days and make an additional \$500 bonus.

	ENTRY PACK (\$199)	BUILDER PACK (\$499)
<b>SPONSOR BONUS</b>	<b>\$75</b>	<b>\$150</b>
<b>MATRIX PAYOUT</b>	<b>60 PV</b>	<b>120 PV</b>

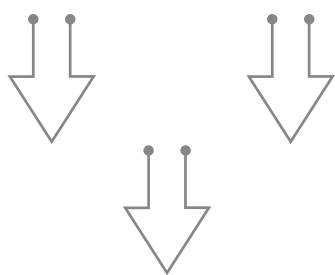
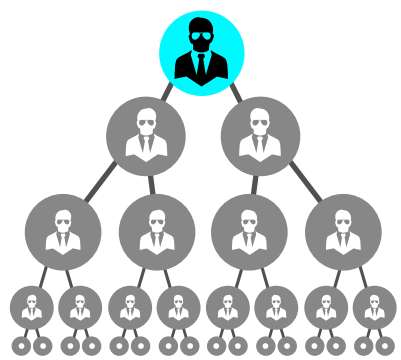
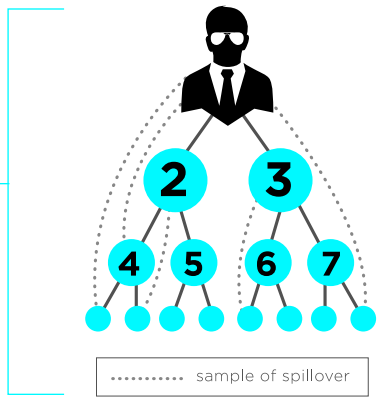
**FOR A TOTAL OF \$1,700 IN YOUR FIRST 30 DAYS**



PAYS MONTHLY

- Creates Team Synergy
- True Career Path
- Simple Duplication
- Multiple Business Centers Avail.
- Easy to Earn
- Up to 65% + Payout

- 2x9 Forced Matrix that pays 5% per level
- 60 PV or RV for basic qualification
- Spillover from upline creates team building
- 4 levels of payout with purchase of PV only.
- Progressivly Learn & Earn



LEADERSHIP LEVELS

LV 1	
LV 2	M. MEMBER ● 60 PV ● 0 PTV
LV 3	
LV 4	
LV 5	M1 ● 60 PV ● 480 PTV
LV 6	
LV 7	M2 ● 60 PV ● 2,000 PTV*
LV 8	
LV 9	M3 ● 60 PV ● 5,000 PTV
LV 10	M4 ● 60 PV ● 50,000 PTV
LV 11	M5 ● 60 PV ● 100,000 PTV
LV 12	M6 ● 60 PV ● 200,000 PTV

\*At levels M2 & above, only 70% of PTV can come from any one sponsorship leg.



4

## LIFESTYLE & REWARDS

An ever-growing appreciation program that rewards your extraordinary effort.

- Global Bonus Pool
- Recognition
- Incentive Trips
- M. Experience
- MORE...

